

# GeoPlot

## Advanced Graphics Software



The GeoPlot module allows for refraction, surface wave, and resistivity data visualization and manipulations. Other Seismager™ modules call on GeoPlot for reading, displaying, editing, annotating, and converting their data outputs. GeoPlot provides advanced tools for geophysical data analysis and interpretation that are not present in other Seismager modules.

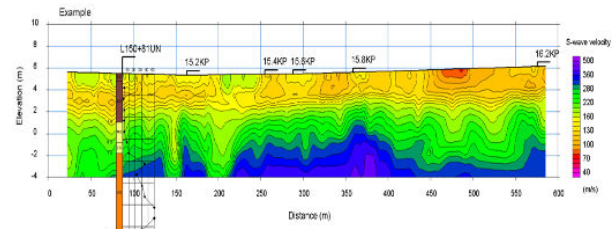
GeoPlot may be used to carry out advanced calculations and allows for the integration of various geophysical data sets. For example, surface wave analysis-derived shear wave velocity data may be integrated with resistivity data to produce cross-plots to aid with interpretation.

## APPLICATIONS

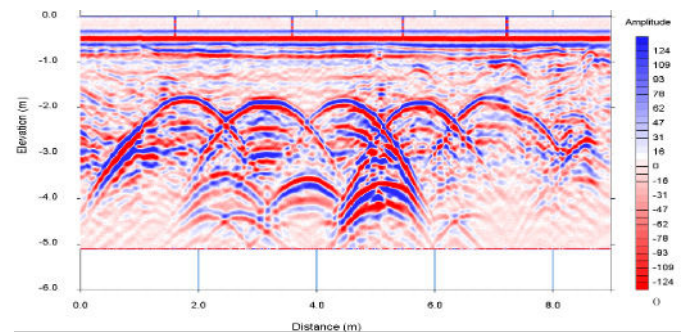
- Read in and display your seismic/resistivity/GPR data.
- Integrate topography data with your seismic/resistivity data.
- Edit and annotate figures.
- Convert figures to alternative formats.
- Integrate well log data and seismic/resistivity data figures.
- Carry out calculations and manipulations with your geophysical data.

## FEATURES & BENEFITS

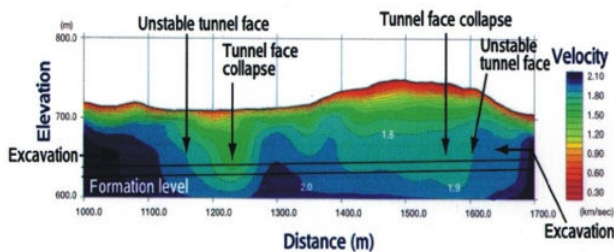
- Calculates phase velocity and automatically picks dispersion curve.
- Performs inversion to iteratively seek 1D  $V_s$  curve or 2D  $V_s$  cross-section.
- Allows active and passive source dispersion curves to be combined for a high-resolution result over all depths sampled.
- Flexible geometry options suit a wide range of site configurations and conditions.
- Handles a range of microtremor data record lengths for investigations to depths as great as 1km.
- Analyses are based on robust methods: frequency domain tau-p and CMP cross-correlation for Multi-channel Analysis of Surface Waves (MASW); Spatial Autocorrelation (SPAC) for Microtremor Array Measurements (MAM).
- Includes editing and QC functions, and velocity modeling.
- No fees for support, maintenance, or upgrades.



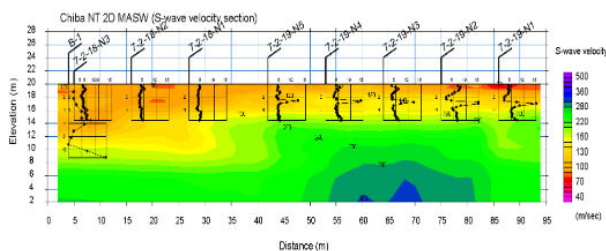
2D MASW cross-section integrated with borehole s-wave and geological data.



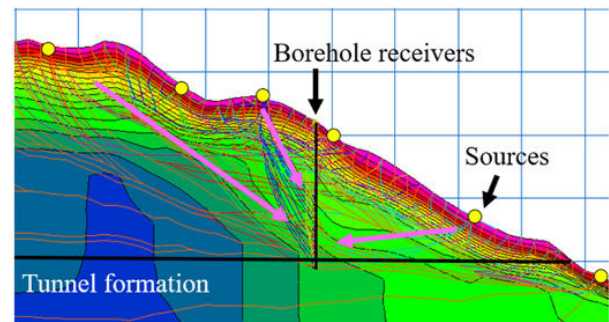
Ground-penetrating radar data.



Annotated refraction tomography cross-section.



2D MASW cross-section integrated with borehole s-wave data.



Crosshole tomography section.

GeoPlot (0724)



**GEOMETRICS INC.** 2190 Fortune Drive, San Jose, California 95131, USA  
Tel: 408-954-0522 • Website: [www.geometrics.com](http://www.geometrics.com) • Email: [sales@geometrics.com](mailto:sales@geometrics.com)

**GEOMETRICS EUROPE** Geomatrix Earth Sciences  
Tel: 44-1525-383438 • Website: [www.geomatrix.co.uk](http://www.geomatrix.co.uk) • Email: [mguy@geometrics.com](mailto:mguy@geometrics.com)

**GEOMETRICS CHINA** Greenview Geophysical Instruments Ltd  
Tel: +86-10-85850099 • Fax: +86-10-85850991 • Email: [greenviewgeo@greenviewgeo.com.cn](mailto:greenviewgeo@greenviewgeo.com.cn)